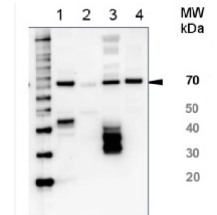


Product Datasheet

HSP70/HSC70 - Heat shock protein 70/Heat shock cognate protein 70 (serum) GRP12199

Species/Host	Rabbit
Reactivity	Fungi, Fish, Mammal
Predicted Reactivity	Bovine, Drosophila melanogaster, Hen, Mouse, Rat
Tested Applications	IP, WB
Immunogen	KLH-conjugated synthetic peptide conserved across all known sequences of HSP70 P08107 and HSC70 proteins P11142
Form/Appearance	Lyophilized
Storage	Store lyophilized/reconstituted at -20°C; once reconstituted make aliquots to avoid repeated freeze-thaw cycles. Please, remember to spin tubes briefly prior to opening them to avoid any losses that might occur from lyophilized material adhering to the cap or sides of the tubes.
Note	For research use only.
Clonality	Polyclonal
Purity	Serum
MW	70 kDa
Dilution Range	1 : 1000 (IP), 1 : 1000-1: 5000 (WB)



Application Notes Additional Information: This antibody is recognizing both, the inducible and the constitutive Hsp70. For detection of plant and algal cytoplasmic hsp70 we recommend following product: AS08 371. Background: Heat shock protein 70 (Hsp70) is the major stress-inducible protein in vertebrates and is highly conserved throughout evolution. It plays a role as a molecular chaperone and is important for allowing cells to cope with acute stress or insult, especially those affecting the protein machinery. Heat shock cognate protein 70 (HSC70) is a highly conserved protein and a member of the family of molecular chaperones. Alternative names: HSP70.1, HSP70-1/HSP70-2, Heat shock 70 kDa protein 8
Reconstitution: For reconstitution add 100 µl of sterile water