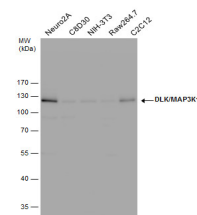


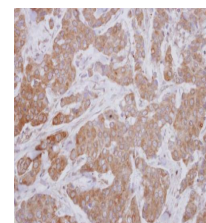
## Product Datasheet

### DLK/MAP3K12 antibody GRP153

<b>Description</b>	May be an activator of the JNK/SAPK pathway. Phosphorylates beta-casein, histone 1 and myelin basic protein in vitro.
<b>Species/Host</b>	Rabbit
<b>Reactivity</b>	Human, Mouse, Rat
<b>Conjugation</b>	Unconjugated
<b>Tested Applications</b>	IHC-Fr, IHC-P, WB
<b>Immunogen</b>	Recombinant protein encompassing a sequence within the center region of mouse DLK/MAP3K12. The exact sequence is proprietary.
<b>Form/Appearance</b>	Liquid: 1XPBS, 1% BSA, 20% Glycerol (pH7). 0.01% Thimerosal was added as a preservative.
<b>Concentration</b>	1 mg/ml
<b>Storage</b>	Store as concentrated solution. Centrifuge briefly prior to opening vial. For short-term storage (1-2 weeks), store at 4°C. For long-term storage, aliquot and store at -20°C or below. Avoid multiple freeze-thaw cycles.
<b>Note</b>	For research use only.
<b>Isotype</b>	IgG
<b>Clonality</b>	Polyclonal
<b>Purity</b>	Purified by antigen-affinity chromatography.
<b>Uniprot ID</b>	<b>Q60700</b>
<b>Entrez</b>	<b>26404</b>
<b>Dilution Range</b>	WB: 1:500-1:3000, IHC-P: 1:100-1:1000, IHC-Fr: 1:100-1:1000



DLK/MAP3K12 antibody detects DLK/MAP3K12 protein by western blot analysis. Various whole cell extracts (30 µg) were separated by 10% SDS-PAGE, and the membrane was blotted with DLK/MAP3K12 antibody (GRP605) diluted by 1:1000. The HRP-conjugated anti-ra



Immunohistochemical analysis of paraffin-embedded human breast cancer, using MAP3K12 (GRP605) antibody at 1:250 dilution.