

## Product Datasheet

### ALDH1A1 antibody GRP152

#### Description

This protein belongs to the aldehyde dehydrogenases family of proteins. Aldehyde dehydrogenase is the second enzyme of the major oxidative pathway of alcohol metabolism. Two major liver isoforms of this enzyme, cytosolic and mitochondrial, can be distinguished by their electrophoretic mobilities, kinetic properties, and subcellular localizations. Most Caucasians have two major isozymes, while approximately 50% of Orientals have only the cytosolic isozyme, missing the mitochondrial isozyme. A remarkably higher frequency of acute alcohol intoxication among Orientals than among Caucasians could be related to the absence of the mitochondrial isozyme. This gene encodes a cytosolic isoform, which has a high affinity for aldehydes. [provided by RefSeq]

#### Species/Host

Rabbit

#### Reactivity

Human, Mouse, Rat

#### Conjugation

Unconjugated

#### Tested Applications

ICC, IF, IHC-P, WB

#### Immunogen

Recombinant protein encompassing a sequence within the center region of human ALDH1A1. The exact sequence is proprietary.

#### Form/Appearance

Liquid: 1XPBS, 1% BSA, 20% Glycerol (pH7). 0.01% Thimerosal was added as a preservative.

#### Concentration

1 mg/ml

#### Storage

Store as concentrated solution. Centrifuge briefly prior to opening vial. For short-term storage (1-2 weeks), store at 4°C. For long-term storage, aliquot and store at -20°C or below. Avoid multiple freeze-thaw cycles.

#### Note

For research use only.

#### Isotype

IgG

#### Clonality

Polyclonal

#### Purity

Purified by antigen-affinity chromatography.

#### Uniprot ID

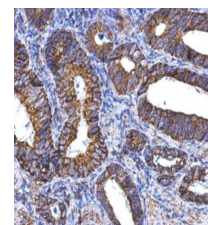
**P00352**

#### Entrez

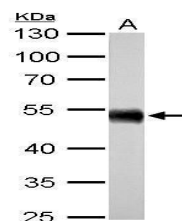
**216**

#### Dilution Range

WB: 1:5000-1:20000, ICC: 1:100-1:1000, IHC-P: 1:100-1:1000



Immunohistochemical analysis of paraffin-embedded human gastric cancer, using ALDH1A1 (GRP604) antibody at 1:500 dilution.



ALDH1A1 antibody detects ALDH1A1 protein by western blot analysis. A. 50 µg mouse liver lysate/extract 10% SDS-PAGE. ALDH1A1 antibody (GRP604) dilution: 1:5000. The HRP-conjugated anti-rabbit IgG antibody was used to detect the primary antibody.