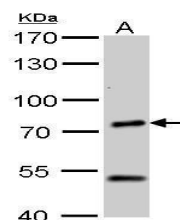


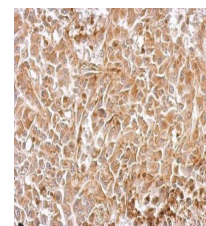
## Product Datasheet

### Chromogranin C antibody GRP150

<b>Description</b>	The protein encoded by this gene is a member of the chromogranin/secretogranin family of neuroendocrine secretory proteins. Studies in rodents suggest that the full-length protein, secretogranin II, is involved in the packaging or sorting of peptide hormones and neuropeptides into secretory vesicles. The full-length protein is cleaved to produce the active peptide secretoneurin, which exerts chemotactic effects on specific cell types, and EM66, whose function is unknown. [provided by RefSeq]
<b>Species/Host</b>	Rabbit
<b>Reactivity</b>	Human, Mouse, Rat
<b>Conjugation</b>	Unconjugated
<b>Tested Applications</b>	ICC, IF, IHC-P, WB
<b>Immunogen</b>	Recombinant protein encompassing a sequence within the N-terminus region of human Chromogranin C. The exact sequence is proprietary.
<b>Form/Appearance</b>	Liquid: 1XPBS, 1% BSA, 20% Glycerol (pH7). 0.01% Thimerosal was added as a preservative.
<b>Concentration</b>	1 mg/ml
<b>Storage</b>	Store as concentrated solution. Centrifuge briefly prior to opening vial. For short-term storage (1-2 weeks), store at 4°C. For long-term storage, aliquot and store at -20°C or below. Avoid multiple freeze-thaw cycles.
<b>Note</b>	For research use only.
<b>Isotype</b>	IgG
<b>Clonality</b>	Polyclonal
<b>Purity</b>	Purified by antigen-affinity chromatography.
<b>Uniprot ID</b>	<b>P13521</b>
<b>Entrez</b>	<b>7857</b>
<b>Dilution Range</b>	WB: 1:500-1:3000, IHC-P: 1:100-1:1000



Chromogranin C antibody detects SCG2 protein by western blot analysis. A. 50 µg mouse brain lysate/extract. 7.5% SDS-PAGE. Chromogranin C antibody (GRP602) dilution: 1:500. The HRP-conjugated anti-rabbit IgG antibody was used to detect the primary antibody.



Chromogranin C antibody detects SCG2 protein at cytosol on RT2 xenograft by immunohistochemical analysis. Sample: Paraffin-embedded RT2 xenograft. Chromogranin C antibody (GRP602) dilution: 1:500.