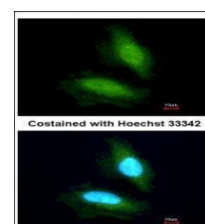


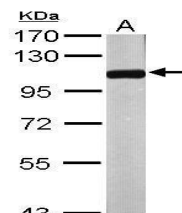
Product Datasheet

NPEPPS antibody [N3C2-2], Internal GRP147

Description	This gene encodes the puromycin-sensitive aminopeptidase, a zinc metallopeptidase which hydrolyzes amino acids from the N-terminus of its substrate. The protein has been localized to both the cytoplasm and to cellular membranes. This enzyme degrades enkaphalins in the brain, and studies in mouse suggest that it is involved in proteolytic events regulating the cell cycle. [provided by RefSeq]
Species/Host	Rabbit
Reactivity	Human, Mouse
Conjugation	Unconjugated
Tested Applications	ICC, IF, WB
Immunogen	Recombinant protein encompassing a sequence within the centre region of human NPEPPS. The exact sequence is proprietary.
Form/Appearance	Liquid: 1XPBS, 20% Glycerol (pH7). 0.025% ProClin 300 was added as a preservative.
Concentration	0.68 mg/ml
Storage	Store as concentrated solution. Centrifuge briefly prior to opening vial. For short-term storage (1-2 weeks), store at 4°C. For long-term storage, aliquot and store at -20°C or below. Avoid multiple freeze-thaw cycles.
Note	For research use only.
Isotype	IgG
Clonality	Polyclonal
Purity	Purified by antigen-affinity chromatography.
Uniprot ID	P55786
Entrez	9520
Dilution Range	WB: 1:500-1:3000, ICC: 1:100-1:1000



Immunofluorescence analysis of paraformaldehyde-fixed HeLa, using NPEPPS (GRP599) antibody at 1:200 dilution.



Sample (50 µg of whole cell lysate) A: Mouse brain 7.5% SDS PAGE GRP599 diluted at 1:1000 The HRP-conjugated anti-rabbit IgG antibody was used to detect the primary antibody.