

Product Datasheet

ALDH1A2 antibody [C1C3] GRP146

Description

This protein belongs to the aldehyde dehydrogenase family of proteins. The product of this gene is an enzyme that catalyzes the synthesis of retinoic acid (RA) from retinaldehyde. Retinoic acid, the active derivative of vitamin A (retinol), is a hormonal signaling molecule that functions in developing and adult tissues. The studies of a similar mouse gene suggest that this enzyme and the cytochrome CYP26A1, concurrently establish local embryonic retinoic acid levels which facilitate posterior organ development and prevent spina bifida. Three transcript variants encoding distinct isoforms have been identified for this gene. [provided by RefSeq]

Species/Host

Rabbit

Reactivity

Human, Mouse, Rat

Conjugation

Unconjugated

Tested Applications

IHC-P, WB

Immunogen

Recombinant protein encompassing a sequence within the center region of human ALDH1A2. The exact sequence is proprietary.

Form/Appearance

Liquid: 1XPBS, 1% BSA, 20% Glycerol (pH7). 0.025% ProClin 300 was added as a preservative.

Concentration

0.43 mg/ml

Storage

Store as concentrated solution. Centrifuge briefly prior to opening. For short-term storage (1-2 weeks), store at 4°C. For long-term storage, aliquot and store at -20°C or below. Avoid multiple freeze-thaw cycles.

Note

For research use only.

Isotype

IgG

Clonality

Polyclonal

Purity

Purified by antigen-affinity chromatography.

Uniprot ID

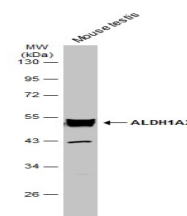
O94788

Entrez

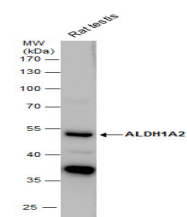
8854

Dilution Range

WB: 1:500-1:3000, IHC-P: 1:100-1:1000



Mouse tissue extract (50 µg) was separated by 10% SDS-PAGE, and the membrane was blotted with ALDH1A2 antibody (GRP598) diluted at 1:1000. The HRP-conjugated anti-rabbit IgG antibody was used to detect the primary antibody.



ALDH1A2 antibody detects ALDH1A2 protein by western blot analysis. Rat tissue extracts (50 µg) was separated by 10% SDS-PAGE, and the membrane was blotted with ALDH1A2 antibody (GRP598) diluted by 1:1000. The HRP-conjugated anti-rabbit IgG antibody was used to detect the primary antibody.