

Product Datasheet

TDP43 antibody GRP141

Description

HIV-1, the causative agent of acquired immunodeficiency syndrome (AIDS), contains an RNA genome that produces a chromosomally integrated DNA during the replicative cycle. Activation of HIV-1 gene expression by the transactivator Tat is dependent on an RNA regulatory element (TAR) located downstream of the transcription initiation site. The protein encoded by this gene is a transcriptional repressor that binds to chromosomally integrated TAR DNA and represses HIV-1 transcription. In addition, this protein regulates alternate splicing of the CFTR gene. A similar pseudogene is present on chromosome 20. [provided by RefSeq]

Species/Host

Rabbit

Reactivity

Human, Mouse, Rat

Conjugation

Unconjugated

Tested Applications

ChIP, ICC, IF, IHC-P, IP, WB

Immunogen

Recombinant protein encompassing a sequence within the center region of human TDP43. The exact sequence is proprietary.

Form/Appearance

Liquid: 1XPBS, 20% Glycerol (pH7). 0.025% ProClin 300 was added as a preservative.

Concentration

1.1 mg/ml

Storage

Store as concentrated solution. Centrifuge briefly prior to opening. For short-term storage (1-2 weeks), store at 4°C. For long-term storage, aliquot and store at -20°C or below. Avoid multiple freeze-thaw cycles.

Note

For research use only.

Isotype

IgG

Clonality

Polyclonal

Purity

Purified by antigen-affinity chromatography.

Uniprot ID

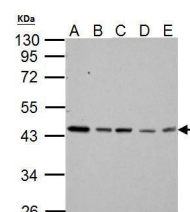
Q13148

Entrez

23435

Dilution Range

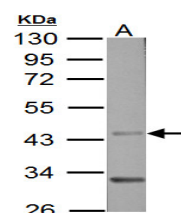
WB: 1:500-1:3000, ICC: 1:100-1:1000, IHC-P: 1:100-1:1000, IP: 1:100-1:1000



TARDBP antibody detects TARDBP

protein by western blot analysis. A. 30 ?g Neuro2A whole cell lysate/extract. B. 30

?g GL261 whole cell lysate/extract. C. 30 ?g NIH-3T3 whole cell lysate/extract. D. 30 ?g BCL-1 whole cell lysate/extract. E. 30 ?g Raw



Sample (50 ?g of whole cell

lysate) A: Rat brain 10% SDS

PAGE GRP593 diluted at 1:3000

The HRP-conjugated anti-rabbit

IgG antibody was used to detect the primary antibody.