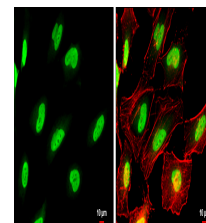


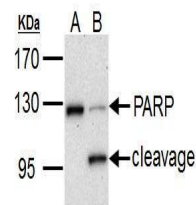
## Product Datasheet

### PARP antibody GRP12

<b>Description</b>	This gene encodes a chromatin-associated enzyme, poly(ADP-ribosyl)transferase, which modifies various nuclear proteins by poly(ADP-ribosyl)ation. The modification is dependent on DNA and is involved in the regulation of various important cellular processes such as differentiation, proliferation, and tumor transformation and also in the regulation of the molecular events involved in the recovery of cell from DNA damage. In addition, this enzyme may be the site of mutation in Fanconi anemia, and may participate in the pathophysiology of type I diabetes. [provided by RefSeq, Jul 2008]
<b>Species/Host</b>	Rabbit
<b>Reactivity</b>	Human, Mouse, Rat
<b>Conjugation</b>	Unconjugated
<b>Tested Applications</b>	ChIP, ICC, IF, IHC-Fr, IHC-P, IP, WB
<b>Immunogen</b>	Recombinant protein encompassing a sequence within the center region of human PARP1. The exact sequence is proprietary.
<b>Form/Appearance</b>	Liquid: 1XPBS, 1% BSA, 20% Glycerol (pH7). 0.025% ProClin 300 was added as a preservative.
<b>Concentration</b>	0.3 mg/ml
<b>Storage</b>	Store as concentrated solution. Centrifuge briefly prior to opening. For short-term storage (1-2 weeks), store at 4°C. For long-term storage, aliquot and store at -20°C or below. Avoid multiple freeze-thaw cycles.
<b>Note</b>	For research use only.
<b>Isotype</b>	IgG
<b>Clonality</b>	Polyclonal
<b>Purity</b>	Purified by antigen-affinity chromatography.
<b>Uniprot ID</b>	<b>P09874</b>
<b>Entrez</b>	<b>142</b>
<b>Dilution Range</b>	WB: 1:500-1:3000, ICC: 1:100-1:1000, IHC-P: 1:100-1:1000



PARP antibody detects PARP protein at nucleus by immunofluorescent analysis. Sample: HeLa cells were fixed in 4% paraformaldehyde at RT for 15 min. Green: PARP protein stained by PARP antibody (GRP464) diluted at 1:500. Red: Phalloidin, a cytoskeleton marker



PARP1 antibody detects PARP1 protein by western blot analysis. A. 30 µg HCT116 whole cell lysate/extract (untreated) B. 30 µg HCT116 whole cell lysate/extract (30 µM cisplatin treatment for 24hr) 7.5% SDS-PAGE PARP1 antibody (GRP464) dilution: