

Product Datasheet

PAX6 antibody GRP137

Description

This gene encodes paired box gene 6, one of many human homologs of the *Drosophila melanogaster* gene *prd*. In addition to the hallmark feature of this gene family, a conserved paired box domain, the encoded protein also contains a homeo box domain. Both domains are known to bind DNA, and function as regulators of gene transcription. This gene is expressed in the developing nervous system, and in developing eyes. Mutations in this gene are known to cause ocular disorders such as aniridia and Peter's anomaly. Alternatively spliced transcript variants encoding either the same or different isoform have been found for this gene. [provided by RefSeq]

Species/Host

Rabbit

Reactivity

Human, Mouse, Rat

Conjugation

Unconjugated

Tested Applications

ICC, IF, IHC-Fr, IHC-P, IP, WB

Immunogen

Recombinant protein encompassing a sequence within the center region of human PAX6. The exact sequence is proprietary.

Form/Appearance

Liquid: 1XPBS, 20% Glycerol (pH7). 0.025% ProClin 300 was added as a preservative.

Concentration

0.85 mg/ml

Storage

Store as concentrated solution. Centrifuge briefly prior to opening. For short-term storage (1-2 weeks), store at 4°C. For long-term storage, aliquot and store at -20°C or below. Avoid multiple freeze-thaw cycles.

Note

For research use only.

Isotype

IgG

Clonality

Polyclonal

Purity

Purified by antigen-affinity chromatography.

Uniprot ID

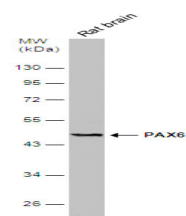
P26367

Entrez

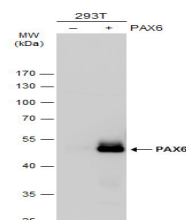
5080

Dilution Range

WB: 1:500-1:3000, ICC: 1:100-1:1000, IHC-P: 1:100-1:1000, IHC-Fr: 1:100-1:1000, IP: 1:1000-1:1000



Rat tissue extract (50 µg) was separated by 10% SDS-PAGE, and the membrane was blotted with PAX6 antibody (GRP589) diluted at 1:500. The HRP-conjugated anti-rabbit IgG antibody was used to detect the primary antibody.



Non-transfected (â€“) and transfected (+) 293T whole cell extracts (30 µg) were separated by 10% SDS-PAGE, and the membrane was blotted with PAX6 antibody (GRP589) diluted at 1:1000. The HRP-conjugated anti-rabbit IgG antibody was used to detect the p