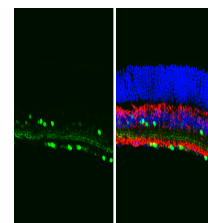


## Product Datasheet

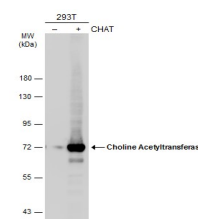
### Choline Acetyltransferase antibody [N1N3] GRP134

<b>Description</b>	This gene encodes an enzyme which catalyzes the biosynthesis of the neurotransmitter acetylcholine. This gene product is a characteristic feature of cholinergic neurons, and changes in these neurons may explain some of the symptoms of Alzheimer disease. Mutations in this gene are associated with congenital myasthenic syndrome associated with episodic apnea. Multiple transcript variants encoding different isoforms have been found for this gene, and some of these variants have been shown to encode more than one isoform. [provided by RefSeq]
<b>Species/Host</b>	Rabbit
<b>Reactivity</b>	Human, Mouse, Rat
<b>Conjugation</b>	Unconjugated
<b>Tested Applications</b>	ICC, IF, IHC-Fr, IHC-P, WB
<b>Immunogen</b>	Recombinant protein encompassing a sequence within the N-terminus region of human Choline Acetyltransferase. The exact sequence is proprietary.
<b>Form/Appearance</b>	Liquid: 1XPBS, 20% Glycerol (pH7). 0.025% ProClin 300 was added as a preservative.
<b>Concentration</b>	1.26 mg/ml
<b>Storage</b>	Store as concentrated solution. Centrifuge briefly prior to opening vial. For short-term storage (1-2 weeks), store at 4°C. For long-term storage, aliquot and store at -20°C or below. Avoid multiple freeze-thaw cycles.
<b>Note</b>	For research use only.
<b>Isotype</b>	IgG
<b>Clonality</b>	Polyclonal
<b>Purity</b>	Purified by antigen-affinity chromatography.
<b>Uniprot ID</b>	<b>P28329</b>
<b>Entrez</b>	<b>1103</b>
<b>Dilution Range</b>	WB: 1:500-1:3000, ICC: 1:100-1:1000, IHC-P: 1:100-1:1000, IHC-Fr: 1:100-1:1000



Choline Acetyltransferase antibody [N1N3] detects Choline Acetyltransferase protein in the amacrine cells by immunohistochemical analysis. Sample: Frozen sectioned adult mouse retina.

Green: Choline Acetyltransferase protein stained by Choline Acetyltransf



Non-transfected (â€“) and transfected (+) 293T whole cell extracts (30 µg) were separated by 7.5% SDS-PAGE, and the membrane was blotted with Choline Acetyltransferase antibody [N1N3] (GRP586) diluted at 1:5000. The HRP-conjugated anti-rabbit IgG antib