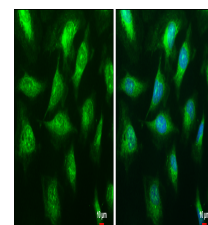


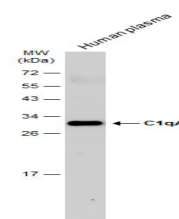
Product Datasheet

C1qA antibody GRP133

Description	This gene encodes a major constituent of the human complement subcomponent C1q. C1q associates with C1r and C1s in order to yield the first component of the serum complement system. Deficiency of C1q has been associated with lupus erythematosus and glomerulonephritis. C1q is composed of 18 polypeptide chains: six A-chains, six B-chains, and six C-chains. Each chain contains a collagen-like region located near the N terminus and a C-terminal globular region. The A-, B-, and C-chains are arranged in the order A-C-B on chromosome 1. This gene encodes the A-chain polypeptide of human complement subcomponent C1q. [provided by RefSeq]
Species/Host	Rabbit
Reactivity	Human
Conjugation	Unconjugated
Tested Applications	ICC, IF, WB
Immunogen	Recombinant protein encompassing a sequence within the center region of human C1qA. The exact sequence is proprietary.
Form/Appearance	Liquid: 1XPBS, 20% Glycerol (pH7). 0.025% ProClin 300 was added as a preservative.
Concentration	0.96 mg/ml
Storage	Store as concentrated solution. Centrifuge briefly prior to opening vial. For short-term storage (1-2 weeks), store at 4°C. For long-term storage, aliquot and store at -20°C or below. Avoid multiple freeze-thaw cycles.
Note	For research use only.
Isotype	IgG
Clonality	Polyclonal
Purity	Purified by antigen-affinity chromatography.
Uniprot ID	P02745
Entrez	712
Dilution Range	WB: 1:500-1:3000, ICC: 1:100-1:1000



C1qA antibody detects C1qA protein at cytoplasm by immunofluorescent analysis. Sample: HeLa cells were fixed in ice-cold MeOH for 5 min. Green: C1qA protein stained by C1qA antibody (GRP585) diluted at 1:100. Blue: Hoechst 33342 staining. Scale bar = 10 μ m.



Human plasma (30 μ g) was separated by 12% SDS-PAGE, and the membrane was blotted with C1qA antibody (GRP585) diluted at 1:1000. The HRP-conjugated anti-rabbit IgG antibody was used to detect the primary