

Product Datasheet

ATP6V1A antibody GRP129

Description

This gene encodes a component of vacuolar ATPase (V-ATPase), a multisubunit enzyme that mediates acidification of eukaryotic intracellular organelles. V-ATPase dependent organelle acidification is necessary for such intracellular processes as protein sorting, zymogen activation, receptor-mediated endocytosis, and synaptic vesicle proton gradient generation. V-ATPase is composed of a cytosolic V1 domain and a transmembrane V0 domain. The V1 domain consists of three A and three B subunits, two G subunits plus the C, D, E, F, and H subunits. The V1 domain contains the ATP catalytic site. The V0 domain consists of five different subunits: a, c, c', c'', and d. Additional isoforms of many of the V1 and V0 subunit proteins are encoded by multiple genes or alternatively spliced transcript variants. This encoded protein is one of two V1 domain A subunit isoforms and is found in all tissues. Transcript variants derived from alternative polyadenylation exist. [provided by RefSeq]

Species/Host

Rabbit

Reactivity

Human, Mouse

Conjugation

Unconjugated

Tested Applications

ICC, IF, IHC-P, IP, WB

Immunogen

Recombinant protein encompassing a sequence within the center region of human ATP6V1A. The exact sequence is proprietary.

Form/Appearance

Liquid: 1XPBS, 20% Glycerol (pH7). 0.025% ProClin 300 was added as a preservative.

Concentration

0.57 mg/ml

Storage

Store as concentrated solution. Centrifuge briefly prior to opening vial. For short-term storage (1-2 weeks), store at 4°C. For long-term storage, aliquot and store at -20°C or below. Avoid multiple freeze-thaw cycles.

Note

For research use only.

Isotype

IgG

Clonality

Polyclonal

Purity

Purified by antigen-affinity chromatography.

Uniprot ID

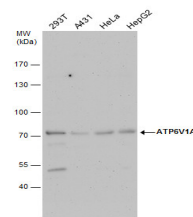
P38606

Entrez

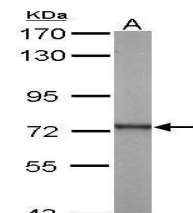
523

Dilution Range

WB: 1:1000-1:10000, ICC: 1:100-1:1000, IHC-P: 1:100-1:1000, IP: 1:100-1:500



ATP6V1A antibody detects ATP6V1A protein by western blot analysis. Various whole cell extracts (30 µg) were separated by 7.5% SDS-PAGE, and the membrane was blotted with ATP6V1A antibody (GRP581) diluted by 1:10000. The HRP-conjugated anti-rabbit IgG



Sample (20 µg of whole cell lysate) A: mouse brain 7.5% SDS PAGE GRP581 diluted at 1:5000. The