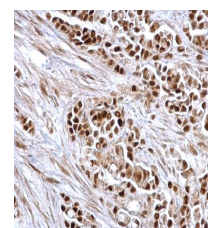


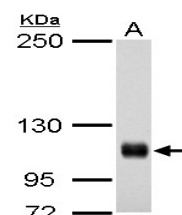
Product Datasheet

Rb antibody GRP11

Description	The protein encoded by this gene is a negative regulator of the cell cycle and was the first tumor suppressor gene found. The encoded protein also stabilizes constitutive heterochromatin to maintain the overall chromatin structure. The active, hypophosphorylated form of the protein binds transcription factor E2F1. Defects in this gene are a cause of childhood cancer retinoblastoma (RB), bladder cancer, and osteogenic sarcoma. [provided by RefSeq]
Species/Host	Rabbit
Reactivity	Human, Mouse
Conjugation	Unconjugated
Tested Applications	ICC, IF, IHC-P, IP, WB
Immunogen	Recombinant protein encompassing a sequence within the C-terminus region of human Rb. The exact sequence is proprietary.
Form/Appearance	Liquid: 1XPBS, 20% Glycerol (pH7). 0.025% ProClin 300 was added as a preservative.
Concentration	0.56 mg/ml
Storage	Store as concentrated solution. Centrifuge briefly prior to opening vial. For short-term storage (1-2 weeks), store at 4°C. For long-term storage, aliquot and store at -20°C or below. Avoid multiple freeze-thaw cycles.
Note	For research use only.
Isotype	IgG
Clonality	Polyclonal
Purity	Purified by antigen-affinity chromatography.
Uniprot ID	P06400
Entrez	5925
Dilution Range	WB: 1:500-1:3000, ICC: 1:100-1:1000, IHC-P: 1:100-1:1000, IP: 1:100-1:500



Rb antibody detects Rb protein at nucleus on human colon carcinoma by immunohistochemical analysis.
Sample: Paraffin-embedded human colon carcinoma.
Rb antibody (GRP463) dilution: 1:500.



Rb antibody detects Rb protein by western blot analysis. A. 30 ?g A431 whole cell lysate/extract 5% SDS-PAGE Rb antibody (GRP463) dilution: 1:500 The HRP-conjugated anti-rabbit IgG antibody was used to detect the primary antibody.