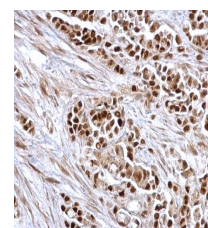


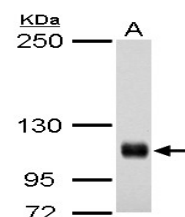
## Product Datasheet

### Rb antibody GRP11

|                            |  |
|----------------------------|--|
| <b>Description</b>         | The protein encoded by this gene is a negative regulator of the cell cycle and was the first tumor suppressor gene found. The encoded protein also stabilizes constitutive heterochromatin to maintain the overall chromatin structure. The active, hypophosphorylated form of the protein binds transcription factor E2F1. Defects in this gene are a cause of childhood cancer retinoblastoma (RB), bladder cancer, and osteogenic sarcoma. [provided by RefSeq] |
| <b>Species/Host</b>        | Rabbit   |
| <b>Reactivity</b>          | Human, Mouse   |
| <b>Conjugation</b>         | Unconjugated   |
| <b>Tested Applications</b> | ICC, IF, IHC-P, IP, WB   |
| <b>Immunogen</b>           | Recombinant protein encompassing a sequence within the C-terminus region of human Rb. The exact sequence is proprietary.   |
| <b>Form/Appearance</b>     | Liquid: 1XPBS, 20% Glycerol (pH7). 0.025% ProClin 300 was added as a preservative.   |
| <b>Concentration</b>       | 0.56 mg/ml   |
| <b>Storage</b>             | Store as concentrated solution. Centrifuge briefly prior to opening vial. For short-term storage (1-2 weeks), store at 4°C. For long-term storage, aliquot and store at -20°C or below. Avoid multiple freeze-thaw cycles.   |
| <b>Note</b>                | For research use only.   |
| <b>Isotype</b>             | IgG  |
| <b>Clonality</b>           | Polyclonal   |
| <b>Purity</b>              | Purified by antigen-affinity chromatography.   |
| <b>Uniprot ID</b>          | <b>P06400</b>  |
| <b>Entrez</b>              | <b>5925</b>  |
| <b>Dilution Range</b>      | WB: 1:500-1:3000, ICC: 1:100-1:1000, IHC-P: 1:100-1:1000, IP: 1:100-1:500  |



Rb antibody detects Rb protein at nucleus on human colon carcinoma by immunohistochemical analysis.  
Sample: Paraffin-embedded human colon carcinoma.  
Rb antibody (GRP463) dilution: 1:500.



Rb antibody detects Rb protein by western blot analysis. A. 30 ?g A431 whole cell lysate/extract 5% SDS-PAGE Rb antibody (GRP463) dilution: 1:500 The HRP-conjugated anti-rabbit IgG antibody was used to detect the primary antibody.