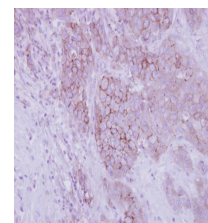


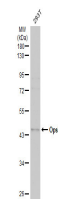
Product Datasheet

Opsin 3 antibody [N1], N-term GRP122

Description	Opsins are members of the guanine nucleotide-binding protein (G protein)-coupled receptor superfamily. In addition to the visual opsins, mammals possess several photoreceptive non-visual opsins that are expressed in extraocular tissues. This gene, opsin 3, is strongly expressed in brain and testis and weakly expressed in liver, placenta, heart, lung, skeletal muscle, kidney, and pancreas. The gene may also be expressed in the retina. The protein has the canonical features of a photoreceptive opsin protein. [provided by RefSeq]
Species/Host	Rabbit
Reactivity	Human, Mouse
Conjugation	Unconjugated
Tested Applications	IHC-Fr, IHC-P, WB
Immunogen	Carrier-protein conjugated synthetic peptide encompassing a sequence within the N-terminus region of human Opsin 3. The exact sequence is proprietary.
Form/Appearance	Liquid: 1XPBS, 20% Glycerol (pH7). 0.025% ProClin 300 was added as a preservative.
Concentration	1.51 mg/ml
Storage	Store as concentrated solution. Centrifuge briefly prior to opening. For short-term storage (1-2 weeks), store at 4°C. For long-term storage, aliquot and store at -20°C or below. Avoid multiple freeze-thaw cycles.
Note	For research use only.
Isotype	IgG
Clonality	Polyclonal
Purity	Purified by antigen-affinity chromatography.
Uniprot ID	Q9H1Y3
Entrez	23596
Dilution Range	WB: 1:500-1:3000, IHC-P: 1:100-1:1000, IHC-Fr: 1:100-1:1000



Immunohistochemical analysis of paraffin-embedded human breast cancer, using Opsin 3 (GRP574) antibody at 1:250 dilution.



Whole cell extract (30 µg) was separated by 10% SDS-PAGE, and the membrane was blotted with Opsin 3 antibody [N1], N-term (GRP574) diluted at 1:1000. The HRP-conjugated anti-rabbit IgG antibody was used to detect the primary antibody.