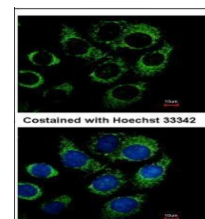


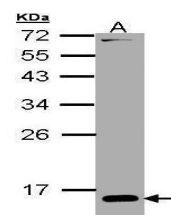
Product Datasheet

RBP1 antibody GRP121

Description	This gene encodes the carrier protein involved in the transport of retinol (vitamin A alcohol) from the liver storage site to peripheral tissue. Vitamin A is a fat-soluble vitamin necessary for growth, reproduction, differentiation of epithelial tissues, and vision. Multiple transcript variants encoding different isoforms have been found for this gene. [provided by RefSeq]
Species/Host	Rabbit
Reactivity	Human, Mouse
Conjugation	Unconjugated
Tested Applications	ICC, IF, IHC-P, WB
Immunogen	Carrier-protein conjugated synthetic peptide encompassing a sequence within the center region of human RBP1. The exact sequence is proprietary.
Form/Appearance	Liquid: 0.1M Tris, 0.1M Glycine, 10% Glycerol (pH7). 0.01% Thimerosal was added as a preservative.
Concentration	0.95 mg/ml
Storage	Store as concentrated solution. Centrifuge briefly prior to opening vial. For short-term storage (1-2 weeks), store at 4°C. For long-term storage, aliquot and store at -20°C or below. Avoid multiple freeze-thaw cycles.
Note	For research use only.
Isotype	IgG
Clonality	Polyclonal
Purity	Purified by antigen-affinity chromatography.
Uniprot ID	P09455
Entrez	5947
Dilution Range	WB: 1:1000-1:10000, ICC: 1:100-1:1000, IHC-P: 1:100-1:1000



Immunofluorescence analysis of methanol-fixed H1299, using CRBP I (GRP573) antibody at 1:500 dilution.



Sample (30 µg of whole cell lysate) A: H1299 15% SDS PAGE GRP573 diluted at 1:5000 The HRP-conjugated anti-rabbit IgG antibody was used to detect the primary antibody.