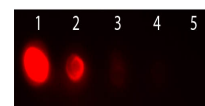


Product Datasheet

AVIDIN RHODAMINE Conjugated GRP10320

Description	AVIDIN RHODAMINE Conjugated
Conjugation	Rhodamine (TRITC)
Tested Applications	FC, IF, IHC-P
Form/Appearance	0.02 M Potassium Phosphate, 0.15 M Sodium Chloride, pH 7.2
Concentration	2.0 mg/mL
Note	For research use only.
Purity	Avidin Rhodamine Conjugated was prepared from chromatographically pure avidin isolated from egg white followed by extensive dialysis against the buffer stated above. Assay by immunoelectrophoresis resulted in a single precipitin arc against anti-Avidin.
Dilution Range	FLISA: 1:10,000 - 1:50,000, Flow Cytometry: 1:500 - 1:2,500, Fluorochrome: 1.6, IF Microscopy: 1:1,000 - 1:5,000
Application Notes	Avidin Rhodamine Conjugated is designed for immunofluorescence microscopy, fluorescence based plate assays (FLISA) and fluorescent western blotting.



Avidin Rhodamine
Conjugated -
Dot Blot