

Product Datasheet

AVIDIN RHODAMINE Conjugated GRP10320

Description AVIDIN RHODAMINE Conjugated

Conjugation Rhodamine (TRITC)

Tested Applications FC, IF, IHC-P

Form/Appearance 0.02 M Potassium Phosphate, 0.15 M Sodium Chloride, pH 7.2

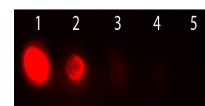
Concentration 2.0 mg/mL

Note For research use only.

Purity Avidin Rhodamine Conjugated was prepared from chromatographically pure avidin isolated from egg white followed by extensive dialysis against the buffer stated above. Assay by immunoelectrophoresis resulted in a single precipitin arc against anti-Avidin.

Dilution Range FLISA: 1:10,000 - 1:50,000, Flow Cytometry: 1:500 - 1:2,500, Fluorochrome: 1.6, IF Microscopy: 1:1,000 - 1:5,000

Application Notes Avidin Rhodamine Conjugated is designed for immunofluorescence microscopy, fluorescence based plate assays (FLISA) and fluorescent western blotting.



Avidin Rhodamine
Conjugated -
Dot Blot