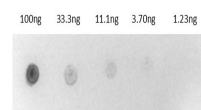


Product Datasheet

BIOTIN ALKALINE PHOSPHATASE Conjugated GRP10328

Description	BIOTIN ALKALINE PHOSPHATASE Conjugated
Conjugation	Biotin
Tested Applications	ELISA, IHC-P, WB
Form/Appearance	0.05 M Tris Chloride, 0.15M Sodium Chloride, 0.001M Magnesium Chloride, 0.0001M Zinc Chloride, 50% (v/v) Glycerol; pH 8.0
Concentration	1.0 mg/mL
Storage	Store vial at 4 °C before opening. DO NOT FREEZE. This product is stable at 4 °C as an undiluted liquid. Dilute only prior to immediate use. Freezing alkaline phosphatase conjugates will result in a substantial loss of enzymatic activity.
Note	For research use only.
Purity	This product was prepared from electrophoretically pure Alkaline Phosphatase and Biotin. Assay by immunoelectrophoresis resulted in a single precipitin arc against anti-Alkaline Phosphatase (calf intestine) and anti-Biotin.
Dilution Range	ELISA: 1:8,000 - 1:32,000, Immunochemistry: 1:200 - 1:1,000, Western Blot: 1:500 - 1:2,500
Application Notes	Biotin Alkaline Phosphatase Conjugated can be utilized in ELISA and Western Blotting experiments where the assay's target of interest is coupled with streptavidin.



Dot Blot of Biotin Alkaline Phosphatase Conjugate