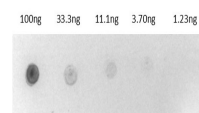


## Product Datasheet

### BIOTIN ALKALINE PHOSPHATASE Conjugated GRP10328

<b>Description</b>	BIOTIN ALKALINE PHOSPHATASE Conjugated
<b>Conjugation</b>	Biotin
<b>Tested Applications</b>	ELISA, IHC-P, WB
<b>Form/Appearance</b>	0.05 M Tris Chloride, 0.15M Sodium Chloride, 0.001M Magnesium Chloride, 0.0001M Zinc Chloride, 50% (v/v) Glycerol; pH 8.0
<b>Concentration</b>	1.0 mg/mL
<b>Storage</b>	Store vial at 4 °C before opening. DO NOT FREEZE. This product is stable at 4 °C as an undiluted liquid. Dilute only prior to immediate use. Freezing alkaline phosphatase conjugates will result in a substantial loss of enzymatic activity.
<b>Note</b>	For research use only.
<b>Purity</b>	This product was prepared from electrophoretically pure Alkaline Phosphatase and Biotin. Assay by immunoelectrophoresis resulted in a single precipitin arc against anti-Alkaline Phosphatase (calf intestine) and anti-Biotin.
<b>Dilution Range</b>	ELISA: 1:8,000 - 1:32,000, Immunochemistry: 1:200 - 1:1,000, Western Blot: 1:500 - 1:2,500
<b>Application Notes</b>	Biotin Alkaline Phosphatase Conjugated can be utilized in ELISA and Western Blotting experiments where the assay's target of interest is coupled with streptavidin.



Dot Blot of Biotin Alkaline Phosphatase Conjugate