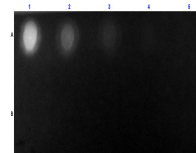


Product Datasheet

STREPTAVIDIN Fluorescein Conjugated GRP10333

Description	STREPTAVIDIN Fluorescein Conjugated
Conjugation	FITC
Tested Applications	FC, IF, IHC-P
Form/Appearance	0.02 M Potassium Phosphate, 0.15 M Sodium Chloride, pH 7.2
Concentration	1.0 mg/mL
Note	For research use only.
Purity	This product was prepared from chromatographically pure Streptavidin. Assay by immunoelectrophoresis resulted in a single precipitin arc against anti-Fluorescein and anti-Streptavidin.
Dilution Range	FLISA: 1:10,000 - 1:50,000, Flow Cytometry: 1:500 - 1:2,500, Fluorochrome: 2.2, IF Microscopy: 1:1,000 - 1:5,000



Dot Blot of
STREPTAVIDIN
Fluorescein Conjugated.