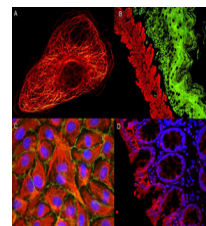


Product Datasheet

STREPTAVIDIN ATTO 488 Conjugated GRP10341

Description	STREPTAVIDIN ATTO 488 Conjugated
Conjugation	ATTO-488
Tested Applications	IF, IHC-P, WB
Form/Appearance	0.02 M Potassium Phosphate, 0.15 M Sodium Chloride, pH 7.2
Concentration	1.0 mg/mL
Note	For research use only.
Purity	STREPTAVIDIN ATTO 488 was prepared from chromatographically purified Streptavidin. Assay by immunoelectrophoresis resulted in a single precipitin arc against anti-Streptavidin. No reaction was observed against anti-Avidin.
Dilution Range	FLISA: >1:20,000, Fluorochrome: 3.5, IF Microscopy: >1:5,000, Western Blot: >1:10,000
Application Notes	The emission spectra for this ATTO conjugate matches the principle output wavelengths of most common fluorescence instrumentation.



IF- Streptavidin ATTO 488