

## Product Datasheet

### STREPTAVIDIN ATTO 647N Conjugated GRP10345

**Description** STREPTAVIDIN ATTO 647N Conjugated

**Conjugation** ATTO-647N

**Tested Applications** IF, IHC-P, WB

**Form/Appearance** 0.02 M Potassium Phosphate, 0.15 M Sodium Chloride, pH 7.2

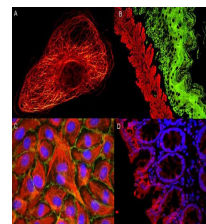
**Concentration** 1.0 mg/mL

**Note** For research use only.

**Purity** STREPTAVIDIN ATTO 647N was prepared from chromatographically purified Streptavidin. Assay by immunoelectrophoresis resulted in a single precipitin arc against anti-Streptavidin. No reaction was observed against anti-Avidin.

**Dilution Range** FLISA: >1:20,000, Fluorochrome: 2.0, IF Microscopy: >1:5,000, Western Blot: >1:10,000

**Application Notes** The emission spectra for this ATTO conjugate matches the principle output wavelengths of most common fluorescence instrumentation.



IF - STREPTAVIDIN ATTO  
647N  
Conjugated