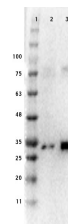


## Product Datasheet

### Ready-To-Use Pdcd4 (RABBIT) Antibody GRP3562

<b>Description</b>	Ready-To-Use Anti-Pdcd4 (RABBIT) Antibody
<b>Species/Host</b>	Rabbit
<b>Reactivity</b>	Human
<b>Conjugation</b>	Unconjugated
<b>Tested Applications</b>	ELISA, IHC-P, IP, WB
<b>Form/Appearance</b>	0.02 M Potassium Phosphate, 0.15 M Sodium Chloride, pH 7.2
<b>Concentration</b>	sufficient to run 10 immunoblot tests
<b>Note</b>	For research use only.
<b>Isotype</b>	IgG
<b>Clonality</b>	Polyclonal
<b>Source</b>	This affinity purified antibody was prepared from whole rabbit serum produced by repeated immunizations with a synthetic peptide corresponding amino acids near the carboxyl terminus of human Pdcd4 protein.
<b>Uniprot ID</b>	<b>Q53EL6</b>
<b>Entrez</b>	<a href="https://www.ncbi.nlm.nih.gov/gene//27250">https://www.ncbi.nlm.nih.gov/gene//27250</a>
<b>Dilution Range</b>	ELISA: User Optimized, Immunochimistry: User Optimized, Immunoprecipitation: User Optimized, Western Blot: 1:1,000



Western Blot Results of  
RTU  
Rabbit Anti-Pdcd4  
Antibody.