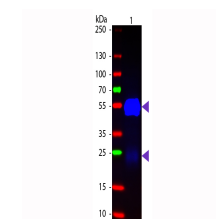


Product Datasheet

Fab RABBIT IgG (H&L) (GOAT) Antibody Fluorescein Conjugated GRP10286

Description	Fab Anti-RABBIT IgG (H&L) (GOAT) Antibody Fluorescein Conjugated
Species/Host	Goat
Conjugation	FITC
Tested Applications	IF, IHC-P
Form/Appearance	0.02 M Potassium Phosphate, 0.15 M Sodium Chloride, pH 7.2
Concentration	1.0 mg/mL
Note	For research use only.
Isotype	IgG Fab
Clonality	Polyclonal
Source	Rabbit IgG whole molecule
Dilution Range	FLISA: 1:10,000 - 1:50,000, Fluorochrome: 2.0, IF Microscopy: 1:1,000 - 1:5,000



WB - Fab Rabbit IgG (H&L) Antibody Fluorescein Conjugated