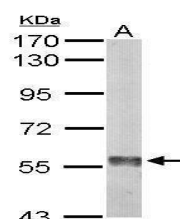


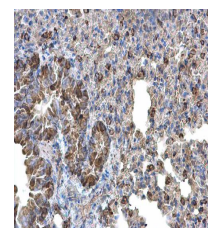
## Product Datasheet

### Monoamine Oxidase B antibody [N2C3] GRP118

<b>Description</b>	The protein encoded by this gene belongs to the flavin monoamine oxidase family. It is a enzyme located in the mitochondrial outer membrane. It catalyzes the oxidative deamination of biogenic and xenobiotic amines and plays an important role in the metabolism of neuroactive and vasoactive amines in the central nervous system and peripheral tissues. This protein preferentially degrades benzylamine and phenylethylamine. [provided by RefSeq]
<b>Species/Host</b>	Rabbit
<b>Reactivity</b>	Human, Mouse
<b>Conjugation</b>	Unconjugated
<b>Tested Applications</b>	ELISA, ICC, IF, IHC-P, WB
<b>Immunogen</b>	Recombinant protein encompassing a sequence within the center region of human Monoamine Oxidase B. The exact sequence is proprietary.
<b>Form/Appearance</b>	Liquid: 1XPBS, 20% Glycerol (pH7). 0.025% ProClin 300 was added as a preservative.
<b>Concentration</b>	0.88 mg/ml
<b>Storage</b>	Store as concentrated solution. Centrifuge briefly prior to opening vial. For short-term storage (1-2 weeks), store at 4°C. For long-term storage, aliquot and store at -20°C or below. Avoid multiple freeze-thaw cycles.
<b>Note</b>	For research use only.
<b>Isotype</b>	IgG
<b>Clonality</b>	Polyclonal
<b>Purity</b>	Purified by antigen-affinity chromatography.
<b>Uniprot ID</b>	<b>P27338</b>
<b>Entrez</b>	<b>4129</b>
<b>Dilution Range</b>	WB: 1:500-1:3000, ICC: 1:100-1:1000, IHC-P: 1:100-1:1000, ELISA: 1:1000-1:10000



Sample (50 µg of whole cell lysate) A: Mouse liver 7.5% SDS PAGE GRP570 diluted at 1:1000 The HRP-conjugated anti-rabbit IgG antibody was used to detect the primary antibody.



Monoamine Oxidase B antibody [N2C3] detects Monoamine Oxidase B protein at cytoplasm on mouse lung by immunohistochemical analysis. Sample: Paraffin-embedded mouse lung. Monoamine Oxidase B antibody [N2C3] (GRP570) diluted at 1:500.