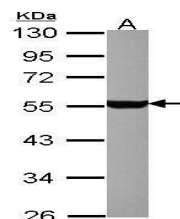


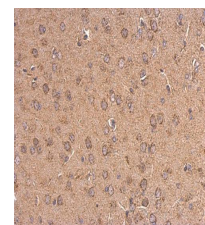
Product Datasheet

5-HT1A receptor antibody [N3C1], Internal GRP117

Description	5-HT1A receptor antibody [N3C1], Internal
Species/Host	Rabbit
Reactivity	Human, Mouse, Rat
Conjugation	Unconjugated
Tested Applications	ICC, IF, IHC-Fr, IHC-P, WB
Immunogen	Carrier-protein conjugated synthetic peptide encompassing a sequence within the center region of Human 5-HT1A receptor. The exact sequence is proprietary.
Form/Appearance	Liquid: 1XPBS, 40% Glycerol (pH7). 0.01% Thimerosal was added as a preservative.
Concentration	1 mg/ml
Storage	Store as concentrated solution. Centrifuge briefly prior to opening vial. For short-term storage (1-2 weeks), store at 4°C. For long-term storage, aliquot and store at -20°C or below. Avoid multiple freeze-thaw cycles.
Note	For research use only.
Isotype	IgG
Clonality	Polyclonal
Purity	Purified by antigen-affinity chromatography.
Uniprot ID	P08908
Entrez	3350
Dilution Range	WB: 1:500-1:3000, ICC: 1:100-1:1000, IHC-P: 1:100-1:1000, IHC-Fr: 1:100-1:1000



5HT1A receptor antibody [N3C1], Internal detects 5HT1A receptor protein by western blot analysis. A. 20 µg D-hippocampus C9 lysate/extract 10% SDS-PAGE 5HT1A receptor antibody [N3C1], Internal (GRP569) dilution: 1:1000 The HRP-conjugated anti-rabbit IgG a



5HT1A Receptor antibody [N3C1], Internal detects 5HT1A Receptor protein at cytosol on mouse duodenum by immunohistochemical analysis. Sample: Paraffin-embedded mouse duodenum. 5HT1A Receptor antibody [N3C1], Internal (GRP569) dilution: 1:500.