

## Product Datasheet

# F(ab')<sub>2</sub> SWINE IgG (H&L) (RABBIT) Antibody Fluorescein Conjugated GRP3243

**Description** F(ab')<sub>2</sub> Anti-SWINE IgG (H&L) (RABBIT) Antibody Fluorescein Conjugated

**Species/Host** Rabbit

**Conjugation** FITC

**Tested Applications** FC, IF, IHC-P

**Form/Appearance** 0.01 M Sodium Phosphate, 0.15 M Sodium Chloride, pH 7.2

**Concentration** 10.0 mg/mL

**Note** For research use only.

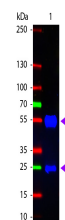
**Isotype** IgG F(ab')<sub>2</sub>

**Clonality** Polyclonal

**Source** Swine IgG whole molecule

**Dilution Range** FLISA: 1:10,000 - 1:50,000, Flow Cytometry: 1:500 - 1:2,500, Fluorochrome: 2.5, IF Microscopy: 1:1,000 - 1:5,000

**Application Notes** Suitable for immunomicroscopy and flow cytometry or FACS analysis as well as other antibody based fluorescent assays requiring extremely low background levels, absence of F(c) mediated binding, lot-to-lot consistency, high titer and specificity.



F(ab')<sub>2</sub> Swine IgG (H&L) Antibody Fluorescein Conjugated - Western Blot