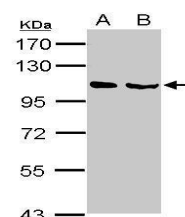


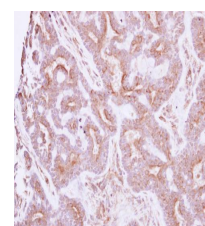
Product Datasheet

NELL1 antibody GRP114

Description	This gene encodes a cytoplasmic protein that contains epidermal growth factor (EGF)-like repeats. The encoded heterotrimeric protein may be involved in cell growth regulation and differentiation. A similar protein in rodents is involved in craniosynostosis. Two transcript variants encoding different isoforms have been found for this gene. [provided by RefSeq]
Species/Host	Rabbit
Reactivity	Human, Mouse, Rat
Conjugation	Unconjugated
Tested Applications	IHC-P, WB
Immunogen	Recombinant protein encompassing a sequence within the center region of human NELL1. The exact sequence is proprietary.
Form/Appearance	Liquid: 1XPBS, 20% Glycerol (pH7). 0.025% ProClin 300 was added as a preservative.
Concentration	1.58 mg/ml
Storage	Store as concentrated solution. Centrifuge briefly prior to opening vial. For short-term storage (1-2 weeks), store at 4°C. For long-term storage, aliquot and store at -20°C or below. Avoid multiple freeze-thaw cycles.
Note	For research use only.
Isotype	IgG
Clonality	Polyclonal
Purity	Purified by antigen-affinity chromatography.
Uniprot ID	Q92832
Entrez	4745
Dilution Range	WB: 1:1000-1:10000, IHC-P: 1:100-1:1000



Sample (30 ug of whole cell lysate) A: NT2D1 B: IMR32
7.5% SDS PAGE GRP566 diluted at 1:5000



Immunohistochemical analysis of paraffin-embedded human breast cancer, using NELL1 (GRP566) antibody at 1:250 dilution.