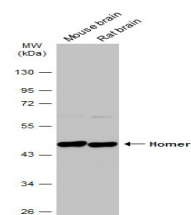


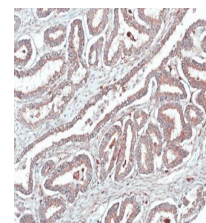
Product Datasheet

Homer1 antibody GRP113

Description	This gene encodes a member of the homer family of dendritic proteins. Members of this family regulate group 1 metabotropic glutamate receptor function. [provided by RefSeq]
Species/Host	Rabbit
Reactivity	Human, Mouse, Rat
Conjugation	Unconjugated
Tested Applications	ICC, IF, IHC-Fr, IHC-P, IP, WB
Immunogen	Recombinant protein encompassing a sequence within the center region of human Homer1. The exact sequence is proprietary.
Form/Appearance	Liquid: 1XPBS, 20% Glycerol (pH7). 0.025% ProClin 300 was added as a preservative.
Concentration	0.75 mg/ml
Storage	Store as concentrated solution. Centrifuge briefly prior to opening vial. For short-term storage (1-2 weeks), store at 4°C. For long-term storage, aliquot and store at -20°C or below. Avoid multiple freeze-thaw cycles.
Note	For research use only.
Isotype	IgG
Clonality	Polyclonal
Purity	Purified by antigen-affinity chromatography.
Uniprot ID	Q86YM7
Entrez	9456
Dilution Range	WB: 1:500-1:10000, ICC: 1:100-1:1000, IHC-P: 1:100-1:1000, IHC-Fr: 1:100-1:1000, IP: 1:100-1:500



Various tissue extracts (50 µg) were separated by 10% SDS-PAGE, and the membrane was blotted with Homer1 antibody (GRP565) diluted at 1:5000. The HRP-conjugated anti-rabbit IgG antibody was used to detect the primary antibody.



Immunohistochemical analysis of paraffin-embedded human ovarian cancer, using HOMER1 (GRP565) antibody at 1:100 dilution.