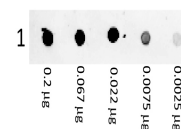


Product Datasheet

F(ab')₂ MOUSE IgG (H&L) (GOAT) Antibody Phycoerythrin conjugated Min X Bv, Ham, Hs, Hu Rb, Rt, & Sh Serum Proteins GRP10056

Description	F(ab') ₂ Anti-MOUSE IgG (H&L) (GOAT) Antibody Phycoerythrin conjugated Min X Bv, Ham, Hs, Hu Rb, Rt, & Sh Serum Proteins
Species/Host	Goat
Reactivity	Mouse
Conjugation	RPE
Tested Applications	FC, IF
Form/Appearance	0.02 M Potassium Phosphate, 0.15 M Sodium Chloride, pH 7.2
Concentration	0.5 mg/mL
Note	For research use only.
Isotype	IgG F(ab') ₂
Clonality	Polyclonal
Source	F(ab') ₂ anti-Mouse IgG (H&L) was produced by repeated immunization with Mouse IgG whole molecule in goat.
Dilution Range	Flow Cytometry: 1:100 - 1:250, IF Microscopy: 1:100 - 1:250



Phycoerythrin Goat F(ab')₂
Anti Mouse IgG (H&L)
Antibody
– Dot Blot