

## Product Datasheet

# F(ab')<sub>2</sub> HUMAN ? (kappa chain) (GOAT) Antibody Fluorescein Conjugated GRP5514

**Description** F(ab')<sub>2</sub> Anti-HUMAN κ (kappa chain) (GOAT) Antibody Fluorescein Conjugated

**Species/Host** Goat

**Conjugation** FITC

**Tested Applications** FC, IF, IHC-P

**Form/Appearance** 0.02 M Potassium Phosphate, 0.15 M Sodium Chloride, pH 7.2

**Concentration** 1.0 mg/ml

**Note** For research use only.

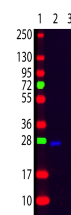
**Isotype** IgG F(ab')<sub>2</sub>

**Clonality** Polyclonal

**Source** Human kappa light chain

**Dilution Range** FLISA: 1:10,000 - 1:50,000, Flow Cytometry: 1:500 - 1:2,500, Fluorochrome: 3.0, IF Microscopy: 1:1,000 - 1:5,000

**Application Notes** Suitable for immunomicroscopy and flow cytometry or FACS analysis as well as other antibody based fluorescent assays requiring extremely low background levels, absence of F(c) mediated binding, lot-to-lot consistency, high titer and specificity.



WB - F(ab')<sub>2</sub> HUMAN  
kappa  
Antibody Fluorescein  
Conjugated