

Product Datasheet

HRH1 antibody GRP112

Description

Histamine is a ubiquitous messenger molecule released from mast cells, enterochromaffin-like cells, and neurons. Its various actions are mediated by histamine receptors H1, H2, H3 and H4. This gene was thought to be intronless until recently. The protein encoded by this gene is an integral membrane protein and belongs to the G protein-coupled receptor superfamily. It mediates the contraction of smooth muscles, the increase in capillary permeability due to contraction of terminal venules, the release of catecholamine from adrenal medulla, and neurotransmission in the central nervous system. Multiple alternatively spliced variants, encoding the same protein, have been identified. [provided by RefSeq]

Species/Host

Rabbit

Reactivity

Human

Conjugation

Unconjugated

Tested Applications

IHC-P, WB

Immunogen

Recombinant protein encompassing a sequence within the center region of human HRH1. The exact sequence is proprietary.

Form/Appearance

Liquid: 0.1M Tris, 0.1M Glycine, 20% Glycerol (pH7). 0.01% Thimerosal was added as a preservative.

Concentration

0.81 mg/ml

Storage

Store as concentrated solution. Centrifuge briefly prior to opening vial. For short-term storage (1-2 weeks), store at 4°C. For long-term storage, aliquot and store at -20°C or below. Avoid multiple freeze-thaw cycles.

Note

For research use only.

Isotype

IgG

Clonality

Polyclonal

Purity

Purified by antigen-affinity chromatography.

Uniprot ID

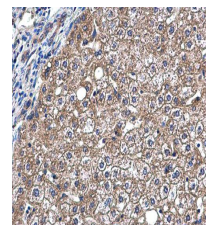
P35367

Entrez

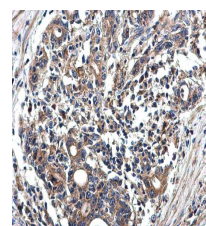
3269

Dilution Range

WB: 1:500-1:3000, IHC-P: 1:100-1:1000



HRH1 antibody detects HRH1 protein at cytoplasm on human hepatocellular carcinomas by immunohistochemical analysis.
Sample: Paraffin-embedded human hepatocellular carcinomas. HRH1 antibody (GRP564) diluted at 1:500.



HRH1 antibody detects HRH1 protein at cytoplasm on human colon carcinoma by immunohistochemical analysis.
Sample: Paraffin-embedded human colon carcinoma. HRH1 antibody (GRP564) diluted at 1:500.