

Product Datasheet

F(ab')₂ HUMAN IgG F(ab')₂ (GOAT) Antibody Min X Bv Hs Ms & Rt Serum Proteins GRP5511

Description F(ab')₂ Anti-HUMAN IgG F(ab')₂ (GOAT) Antibody Min X Bv Hs Ms & Rt Serum Proteins

Species/Host Goat

Reactivity Human

Conjugation Unconjugated

Tested Applications ELISA, IHC-P, WB

Form/Appearance 0.02 M Potassium Phosphate, 0.15 M Sodium Chloride, pH 7.2

Concentration 1.0 mg/mL

Note For research use only.

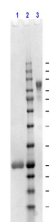
Isotype IgG F(ab')₂

Clonality Polyclonal

Source Anti-Human IgG was produced by repeated immunization with human IgG F(ab')₂ fragment in goat.

Dilution Range ELISA: 1:25,000, Immunochemistry: 1:500 - 1:2,500, Western Blot: 1:1,000 - 1:5,000

Application Notes Antibody Anti-Human IgG F(ab')₂ is suitable for immunoblotting (western or dot blot), ELISA, and immunohistochemistry as well as other peroxidase-antibody based enzymatic assays requiring lot-to-lot consistency.



SDS-PAGE of Goat F(ab')₂ Anti-Human IgG F(ab')₂ Antibody