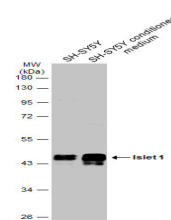


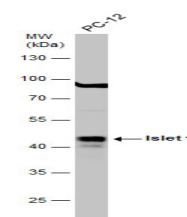
Product Datasheet

Islet 1 antibody GRP111

Description	This gene encodes a member of the LIM/homeodomain family of transcription factors. The encoded protein binds to the enhancer region of the insulin gene, among others, and may play an important role in regulating insulin gene expression. The encoded protein is central to the development of pancreatic cell lineages and may also be required for motor neuron generation. Mutations in this gene have been associated with maturity-onset diabetes of the young. [provided by RefSeq]
Species/Host	Rabbit
Reactivity	Human, Mouse, Rat
Conjugation	Unconjugated
Tested Applications	ICC, IF, IHC-Fr, IHC-P, WB
Immunogen	Recombinant protein encompassing a sequence within the center region of human Islet 1. The exact sequence is proprietary.
Form/Appearance	Liquid: 1XPBS, 20% Glycerol (pH7). 0.025% ProClin 300 was added as a preservative.
Concentration	1.1 mg/ml
Storage	Store as concentrated solution. Centrifuge briefly prior to opening vial. For short-term storage (1-2 weeks), store at 4°C. For long-term storage, aliquot and store at -20°C or below. Avoid multiple freeze-thaw cycles.
Note	For research use only.
Isotype	IgG
Clonality	Polyclonal
Purity	Purified by antigen-affinity chromatography.
Uniprot ID	P61371
Entrez	3670
Dilution Range	WB: 1:5000-1:20000, ICC: 1:100-1:1000, IHC-P: 1:100-1:1000, IHC-Fr: 1:100-1:1000



SH-SY5Y whole cell and nuclear extracts (30 µg) were separated by 10% SDS-PAGE, and the membrane was blotted with Islet 1 antibody (GRP563) diluted at 1:10000. The HRP-conjugated anti-rabbit IgG antibody was used to detect the primary antibody.



Whole cell extract (30 µg) was separated by 10% SDS-PAGE, and the membrane was blotted with Islet 1 antibody (GRP563) diluted at 1:1000. The HRP-conjugated anti-rabbit IgG antibody was used to detect the primary antibody.