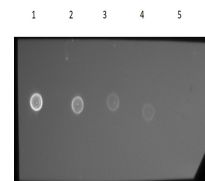


## Product Datasheet

# F(ab')<sub>2</sub> GUINEA PIG IgG [H&L] (RABBIT) Antibody Phycoerythrin conjugated GRP5473

<b>Description</b>	F(ab') <sub>2</sub> Anti-GUINEA PIG IgG [H&L] (RABBIT) Antibody Phycoerythrin conjugated
<b>Species/Host</b>	Rabbit
<b>Conjugation</b>	RPE
<b>Tested Applications</b>	FC, IF
<b>Form/Appearance</b>	0.02 M Potassium Phosphate, 0.15 M Sodium Chloride, pH 7.2
<b>Concentration</b>	0.5 mg/mL
<b>Note</b>	For research use only.
<b>Isotype</b>	IgG F(ab') <sub>2</sub>
<b>Clonality</b>	Polyclonal
<b>Source</b>	Guinea Pig IgG whole molecule
<b>Dilution Range</b>	Flow Cytometry: user optimized, IF Microscopy: 1:100-1:250



Dot Blot Results of F(ab')<sub>2</sub>  
Rabbit Anti-Guinea Pig IgG  
Antibody Phycoerythrin  
Conjugated