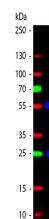


## Product Datasheet

# F(ab')<sub>2</sub> GOAT IgG (H&L) (RABBIT) Antibody Fluorescein Conjugated Min X Human Serum Proteins GRP5447

<b>Description</b>	F(ab') <sub>2</sub> Anti-GOAT IgG (H&L) (RABBIT) Antibody Fluorescein Conjugated Min X Human Serum Proteins
<b>Species/Host</b>	Rabbit
<b>Conjugation</b>	FITC
<b>Tested Applications</b>	FC, IF, IHC-P
<b>Form/Appearance</b>	0.02 M Potassium Phosphate, 0.15 M Sodium Chloride, pH 7.2
<b>Concentration</b>	1.0 mg/mL
<b>Note</b>	For research use only.
<b>Isotype</b>	IgG F(ab') <sub>2</sub>
<b>Clonality</b>	Polyclonal
<b>Source</b>	Goat IgG whole molecule
<b>Dilution Range</b>	FLISA: 1:10,000 - 1:50,000, Flow Cytometry: 1:500-1:2,500, Fluorochrome: 2.4, IF Microscopy: 1:1,000 - 1:5,000

**Application Notes** Suitable for immunomicroscopy and flow cytometry or FACS analysis as well as other antibody based fluorescent assays requiring extremely low background levels, absence of F(c) mediated binding, lot-to-lot consistency, high titer and specificity.



WB - F(ab')<sub>2</sub> Goat IgG (H&L) Antibody Fluorescein Conjugated Pre-Adsorbed