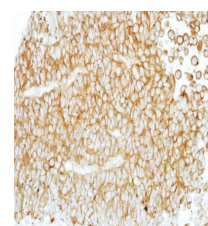


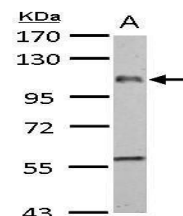
Product Datasheet

F4/80 antibody [C2C3], C-term GRP109

Description	This gene encodes a protein that has a domain resembling seven transmembrane G protein-coupled hormone receptors (7TM receptors) at its C-terminus. The N-terminus of the encoded protein has six EGF-like modules, separated from the transmembrane segments by a serine/threonine-rich domain, a feature reminiscent of mucin-like, single-span, integral membrane glycoproteins with adhesive properties. [provided by RefSeq]
Species/Host	Rabbit
Reactivity	Human, Mouse, Rat
Conjugation	Unconjugated
Tested Applications	IHC-P, WB
Immunogen	Recombinant protein encompassing a sequence within the C-terminus region of Human F4/80. The exact sequence is proprietary.
Form/Appearance	Liquid: 1XPBS, 1% BSA, 20% Glycerol (pH7). 0.025% ProClin 300 was added as a preservative.
Concentration	0.23 mg/ml
Storage	Store as concentrated solution. Centrifuge briefly prior to opening vial. For short-term storage (1-2 weeks), store at 4°C. For long-term storage, aliquot and store at -20°C or below. Avoid multiple freeze-thaw cycles.
Note	For research use only.
Isotype	IgG
Clonality	Polyclonal
Purity	Purified by antigen-affinity chromatography.
Uniprot ID	Q14246
Entrez	2015
Dilution Range	WB: 1:500-1:3000, IHC-P: 1:100-1:1000



Immunohistochemical analysis of paraffin-embedded PC13 xenograft, using EMR1 (GRP561) antibody at 1:100 dilution.



EMR1 antibody [C2C3], C-term detects EMR1 protein by western blot analysis. A. 50 µg rat liver lysate/extract. 7.5% SDS-PAGE. EMR1 antibody [C2C3], C-term (GRP561) dilution: 1:1000. The HRP-conjugated anti-rabbit IgG antibody was used to detect the primary