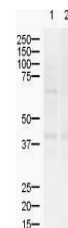


Product Datasheet

ZIC-2 (RABBIT) Antibody GRP3480

Description	Anti-ZIC-2 (RABBIT) Antibody
Species/Host	Rabbit
Reactivity	Mouse, Rat
Conjugation	Unconjugated
Tested Applications	ELISA, WB
Form/Appearance	0.02 M Potassium Phosphate, 0.15 M Sodium Chloride, pH 7.2
Concentration	1.0 mg/mL
Note	For research use only.
Isotype	IgG
Clonality	Polyclonal
Source	This affinity purified antibody was prepared from whole rabbit serum produced by repeated immunizations with a synthetic peptide corresponding to an internal region near amino acids 180-210 of Mouse ZIC-2.
Uniprot ID	Q62520
Dilution Range	ELISA: 1:10,000 - 1:50,000, Western Blot: 1:500 - 1:2,000



Anti-ZIC2 Antibody -
Western
Blot