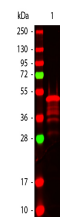


Product Datasheet

VSV-G EPI TOPE TAG (RABBIT) Antibody GRP3394

Description	Anti-VSV-G EPI TOPE TAG (RABBIT) Antibody
Species/Host	Rabbit
Conjugation	Unconjugated
Tested Applications	ELISA, IF, IHC-P, WB
Form/Appearance	0.02 M Potassium Phosphate, 0.15 M Sodium Chloride, pH 7.2
Concentration	1.0mg/mL
Note	For research use only.
Isotype	IgG
Clonality	Polyclonal
Purity	This affinity purified antibody is directed against VSV-G protein. The product was affinity purified from monospecific antiserum by immunoaffinity purification.
Source	This affinity purified antibody was prepared from whole rabbit serum produced by repeated immunizations with a synthetic peptide corresponding aa 501-511 of vesicular stomatitis virus glycoprotein (VSV-G).
Dilution Range	ELISA: 1:50,000 - 1:100,000, Immunochemistry: 1:200 - 1:500, IF Microscopy: 1:200 - 1:500, Western Blot: 1:1,000 - 1:5,000



Western Blot - VSV-G Antibody