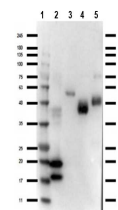


Product Datasheet

VhH (RABBIT) Antibody GRP2387

Description	Anti-VhH (RABBIT) Antibody
Species/Host	Rabbit
Conjugation	Unconjugated
Tested Applications	ELISA, WB
Form/Appearance	0.02 M Potassium Phosphate, 0.15 M Sodium Chloride, pH 7.2
Concentration	1.08 mg/mL
Note	For research use only.
Isotype	IgG
Clonality	Polyclonal
Purity	Anti-VhH is directed against the llama VhH protein fragment. The product was purified from monospecific antiserum by protein A chromatography. Anti-Vhh antibody detects recombinant VhH proteins, native Llama IgG2 and native Llama IgG3.
Source	This antibody was prepared from whole rabbit serum produced by repeated immunizations with a VhH camelid domain protein.
Dilution Range	ELISA: 1:10,000-1:50,000, Western Blot: 1:1,000-1:5,000
Application Notes	Anti-VhH antibody has been tested by ELISA and Western Blot. Specific conditions for reactivity should be optimized by the end user. Some cross-reactivity to E.coli proteins may be observed.



Western blot of Anti-VHH antibody