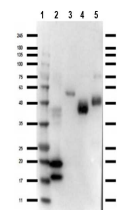


## Product Datasheet

### VhH (RABBIT) Antibody GRP2386

<b>Description</b>	Anti-VhH (RABBIT) Antibody
<b>Species/Host</b>	Rabbit
<b>Conjugation</b>	Unconjugated
<b>Tested Applications</b>	ELISA, WB
<b>Form/Appearance</b>	0.02 M Potassium Phosphate, 0.15 M Sodium Chloride, pH 7.2
<b>Concentration</b>	1.08 mg/mL
<b>Note</b>	For research use only.
<b>Isotype</b>	IgG
<b>Clonality</b>	Polyclonal
<b>Purity</b>	Anti-VhH is directed against the llama VhH protein fragment. The product was purified from monospecific antiserum by protein A chromatography. Anti-Vhh antibody detects recombinant VhH proteins, native Llama IgG2 and native Llama IgG3.
<b>Source</b>	This antibody was prepared from whole rabbit serum produced by repeated immunizations with a VhH camelid domain protein.
<b>Dilution Range</b>	ELISA: 1:10,000-1:50,000, Western Blot: 1:1,000-1:5,000
<b>Application Notes</b>	Anti-VhH antibody has been tested by ELISA and Western Blot. Specific conditions for reactivity should be optimized by the end user. Some cross-reactivity to E.coli proteins may be observed.



Western blot of Anti-VHH Antibody