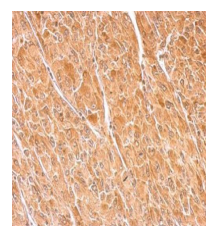


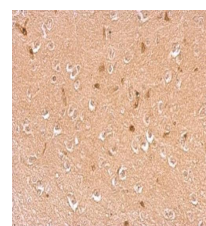
Product Datasheet

Dopamine beta Hydroxylase antibody GRP106

Description	The protein encoded by this gene is an oxidoreductase belonging to the copper type II, ascorbate-dependent monooxygenase family. It is present in the synaptic vesicles of postganglionic sympathetic neurons and converts dopamine to norepinephrine. It exists in both soluble and membrane-bound forms, depending on the absence or presence, respectively, of a signal peptide. [provided by RefSeq]
Species/Host	Rabbit
Reactivity	Human, Mouse, Rat
Conjugation	Unconjugated
Tested Applications	IHC-P, WB
Immunogen	Recombinant protein encompassing a sequence within the center region of human Dopamine beta Hydroxylase. The exact sequence is proprietary.
Form/Appearance	Liquid: 1XPBS, 20% Glycerol (pH7). 0.025% ProClin 300 was added as a preservative.
Concentration	0.72 mg/ml
Storage	Store as concentrated solution. Centrifuge briefly prior to opening vial. For short-term storage (1-2 weeks), store at 4°C. For long-term storage, aliquot and store at -20°C or below. Avoid multiple freeze-thaw cycles.
Note	For research use only.
Isotype	IgG
Clonality	Polyclonal
Purity	Purified by antigen-affinity chromatography.
Uniprot ID	P09172
Entrez	1621
Dilution Range	WB: 1:500-1:3000, IHC-P: 1:100-1:1000



Dopamine beta hydroxylase antibody detects DBH protein at cytosol on U87 xenograft by immunohistochemical analysis.
Sample: Paraffin-embedded U87 xenograft. Dopamine beta hydroxylase antibody (GRP558) dilution: 1:500.



Dopamine beta hydroxylase antibody detects DBH protein at cytosol on mouse brain by immunohistochemical analysis.
Sample: Paraffin-embedded mouse brain. Dopamine beta hydroxylase antibody (GRP558) dilution: 1:500.