

Product Datasheet

TRYPSIN INHIBITOR (RABBIT) Antibody Biotin Conjugated GRP2683

Description Anti-TRYPSIN INHIBITOR (RABBIT) Antibody Biotin Conjugated

Species/Host Rabbit

Reactivity Plant

Conjugation Biotin

Tested Applications ELISA, WB

Form/Appearance 0.02 M Potassium Phosphate, 0.15 M Sodium Chloride, pH 7.2

Concentration 1.0 mg/mL

Note For research use only.

Isotype IgG

Clonality Polyclonal

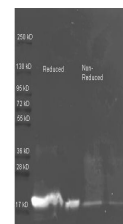
Source Anti-Trypsin Inhibitor was produced by repeated immunizations with soy bean trypsin inhibitor.

Uniprot ID **P01070**

Entrez <https://www.ncbi.nlm.nih.gov/gene//547831>

Dilution Range ELISA: 1:1,000 - 1:5,000, Western Blot: 1:500 - 1:2,500

Application Notes Anti-Trypsin Inhibitor antibody is suitable for western blotting and for capture ELISA. Researchers should determine optimal titers for applications that are not stated below.



Anti Trypsin Inhibitor
Polyclonal
Antibody-Western
Blot