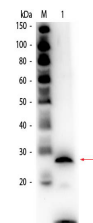


## Product Datasheet

### TRYPSIN (RABBIT) Antibody Biotin Conjugated GRP2462

<b>Description</b>	Anti-TRYPSIN (RABBIT) Antibody Biotin Conjugated
<b>Species/Host</b>	Rabbit
<b>Reactivity</b>	Bovine
<b>Conjugation</b>	Biotin
<b>Tested Applications</b>	ELISA, IHC-P, WB
<b>Form/Appearance</b>	0.02 M Potassium Phosphate, 0.15 M Sodium Chloride, pH 7.2
<b>Concentration</b>	1.0 mg/mL
<b>Note</b>	For research use only.
<b>Isotype</b>	IgG
<b>Clonality</b>	Polyclonal
<b>Source</b>	Anti-Trypsin Antibody was produced by repeated immunizations with bovine pancreatic trypsin protein purified.
<b>Uniprot ID</b>	<b>P00760</b>
<b>Entrez</b>	<a href="https://www.ncbi.nlm.nih.gov/gene//780933">https://www.ncbi.nlm.nih.gov/gene//780933</a>
<b>Dilution Range</b>	ELISA: 1:2,000 - 1:10,000, Immunochemistry: 1:200 - 1:1,000, Western Blot: 1:500 - 1:2,500
<b>Application Notes</b>	Anti-Trypsin Antibody is suitable for western blotting and for ELISA. Researchers should determine optimal titers for applications that are not stated below.



Trypsin Antibody Biotin Conjugated - Western Blot