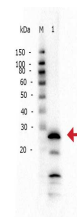


Product Datasheet

TRYPSIN (RABBIT) Antibody GRP2286

Description	Anti-TRYPSIN (RABBIT) Antibody
Species/Host	Rabbit
Reactivity	Bovine
Conjugation	Unconjugated
Tested Applications	ELISA, WB



Rabbit anti-Trypsin WB

Form/Appearance	0.02 M Potassium Phosphate, 0.15 M Sodium Chloride, pH 7.2
Concentration	1.0 mg/ml
Note	For research use only.
Isotype	IgG
Clonality	Polyclonal
Source	Anti-Trypsin Antibody was produced by repeated immunizations with bovine pancreatic trypsin protein purified.
Uniprot ID	P00760
Entrez	https://www.ncbi.nlm.nih.gov/gene//780933
Dilution Range	ELISA: 1:5,000 - 1:20,000, Western Blot: 1:1,000 - 1:5,000
Application Notes	Anti-Trypsin Antibody is suitable for western blotting and for ELISA. Researchers should determine optimal titers for applications that are not stated below.