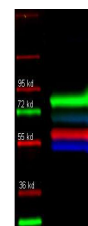


Product Datasheet

TRANSFERRIN (Human Serum) (RABBIT) Antibody Biotin Conjugated GRP3035

Description	Anti-TRANSFERRIN (Human Serum) (RABBIT) Antibody Biotin Conjugated
Species/Host	Rabbit
Reactivity	Human
Conjugation	Biotin
Tested Applications	ELISA, IHC-P, WB
Form/Appearance	0.02 M Potassium Phosphate, 0.15 M Sodium Chloride, pH 7.2
Concentration	1.0 mg/mL
Note	For research use only.
Isotype	IgG
Clonality	Polyclonal
Source	Transferrin [Human Serum]
Uniprot ID	P02787
Entrez	https://www.ncbi.nlm.nih.gov/gene//7018
Dilution Range	ELISA: 1:20,000 - 1:150,000, Immunochimistry: 1:1,000 - 1:5,000, Western Blot: 1:2,000 - 1:10,000

Application Notes Anti-TRANSFERRIN Antibody, Biotin Conjugated has been tested for use in Immunoblotting, ELISA, immunohistochemistry, immunofluorescence microscopy as well as other antibody based assays. Optimal concentrations should be determined by the researcher.



Anti Transferrin
antibody-Fluorescent
western
blot