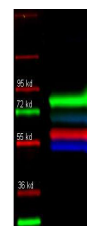


## Product Datasheet

# TRANSFERRIN (Human Serum) (RABBIT) Antibody Biotin Conjugated GRP3034

<b>Description</b>	Anti-TRANSFERRIN (Human Serum) (RABBIT) Antibody Biotin Conjugated
<b>Species/Host</b>	Rabbit
<b>Reactivity</b>	Human
<b>Conjugation</b>	Biotin
<b>Tested Applications</b>	ELISA, IHC-P, WB
<b>Form/Appearance</b>	0.02 M Potassium Phosphate, 0.15 M Sodium Chloride, pH 7.2
<b>Concentration</b>	1.0 mg/mL
<b>Note</b>	For research use only.
<b>Isotype</b>	IgG
<b>Clonality</b>	Polyclonal
<b>Source</b>	Transferrin [Human Serum]
<b>Uniprot ID</b>	<b>P02787</b>
<b>Entrez</b>	<a href="https://www.ncbi.nlm.nih.gov/gene//7018">https://www.ncbi.nlm.nih.gov/gene//7018</a>
<b>Dilution Range</b>	ELISA: 1:20,000 - 1:150,000, Immunochimistry: 1:1,000 - 1:5,000, Western Blot: 1:2,000 - 1:10,000

**Application Notes** Anti-Transferrin Antibody, Biotin Conjugated has been tested for use in Immunoblotting, ELISA, immunohistochemistry, immunofluorescence microscopy as well as other antibody based assays. Optimal concentrations should be determined by the researcher.



Anti Transferrin  
antibody-Fluorescent  
western  
blot