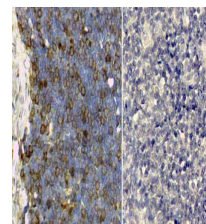


Product Datasheet

TRANSFERRIN (Human Serum) (RABBIT) Antibody GRP3019

Description	Anti-TRANSFERRIN (Human Serum) (RABBIT) Antibody
Species/Host	Rabbit
Reactivity	Human
Conjugation	Unconjugated
Tested Applications	ELISA, IHC-P, WB
Form/Appearance	0.02 M Potassium Phosphate, 0.15 M Sodium Chloride, pH 7.2
Concentration	1.0 mg/ml
Note	For research use only.
Isotype	IgG
Clonality	Polyclonal
Source	Transferrin Antibody was produced by repeated immunizations with human serum Transferrin protein.
Uniprot ID	P02787
Entrez	https://www.ncbi.nlm.nih.gov/gene//7018
Dilution Range	ELISA: 1:20,000 - 1:100,000, Immunochemistry: 1:1,000 - 1:5,000, Western Blot: 1:2,000 - 1:10,000
Application Notes	Anti-Transferrin Antibody is suitable for western blotting, ELISA and IHC. Researchers should determine optimal titers for applications that are not stated below.



Immunohistochemistry of
Rabbit
anti human Transferrin
antibody