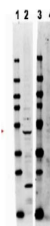


Product Datasheet

TRAF2 (RABBIT) Antibody GRP3665

Description	Anti-TRAF2 (RABBIT) Antibody
Species/Host	Rabbit
Reactivity	Human
Conjugation	Unconjugated
Tested Applications	ELISA, IF, WB
Form/Appearance	0.02 M Potassium Phosphate, 0.15 M Sodium Chloride, pH 7.2
Concentration	0.93 mg/mL
Note	For research use only.
Isotype	IgG
Clonality	Polyclonal
Source	This affinity purified antibody was prepared from whole rabbit serum produced by repeated immunizations with a synthetic peptide corresponding to an internal region human TRAF2.
Uniprot ID	Q12933
Entrez	https://www.ncbi.nlm.nih.gov/gene//7186
Dilution Range	ELISA: 1:60,000 - 1:250,000, IF Microscopy: User Optimized, Western Blot: 1 µg /mL

Application Notes Rabbit Anti-TRAF2 Antibody has been testing in ELISA and Western Blot. Positive control HeLa Whole Cell lysate (p/n W09-000-364) expect ~47kDa. Specific conditions for reactivity should be optimized by the end user.



Anti-TRAF2 Antibody -
Western
Blot